



COMPASS

Queens Luxury Report

July 14 - 20, 2025, Residential Contracts \$1.25M+

Photo: [11-20 Shore Road](#)

The Queens luxury real estate market, defined as all properties priced \$1.25M and above, saw 12 contracts signed this week, made up of 3 condos, and 9 houses. The previous week saw 18 deals. For more information or data, please reach out to a Compass agent.

\$1,854,533

Average Asking Price

\$1,475,000

Median Asking Price

\$1,009

Average PPSF

0%

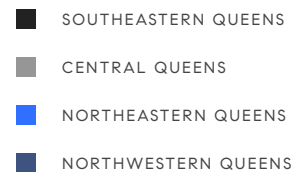
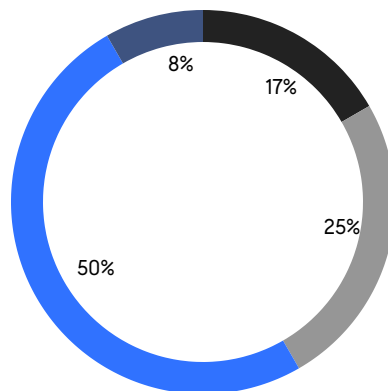
Average Discount

\$22,254,388

Total Volume

90

Average Days On Market

**3**

Condo Deal(s)

0

Co-op Deal(s)

9

Single-Family Deal(s)

\$1,685,167

Average Asking Price

\$0

Average Asking Price

\$1,910,988

Average Asking Price

\$1,500,000

Median Asking Price

\$0

Median Asking Price

\$1,450,000

Median Asking Price

\$1,496

Average PPSF

\$847

Average PPSF

1,185

Average SqFt

2,245

Average SqFt



86-27 Marengo St

Holliswood

Contract Signed

Type	House	Price	\$4,499,000	Sq. Ft.	4,400	Beds	5
DOM	35	Initial	\$4,499,000	PPSF	\$1,023	Baths	5

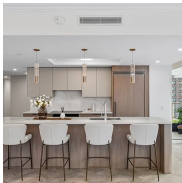


23 Ascan Ave

Forest Hills

Contract Signed

Type	House	Price	\$2,250,000	Sq. Ft.	3,025	Beds	4
DOM	9	Initial	\$2,250,000	PPSF	\$744	Baths	3

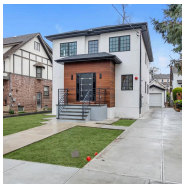


78-29 Austin St, Unit 511

Forest Hills

Contract Signed

Type	Condo	Price	\$2,215,500	Sq. Ft.	1,813	Beds	3
DOM	-	Initial	\$2,215,500	PPSF	\$1,223	Baths	2.5



33-69 164th St

Flushing

Contract Signed

Type	House	Price	\$1,899,000	Sq. Ft.	2,000	Beds	3
DOM	95	Initial	\$1,899,000	PPSF	\$950	Baths	3



69-46 Fleet St

Forest Hills

Contract Signed

Type	House	Price	\$1,849,000	Sq. Ft.	1,780	Beds	4
DOM	26	Initial	\$1,849,000	PPSF	\$1,039	Baths	2.5



27-20 42nd Road, Unit 7D

Long Island City

Contract Signed

Type	Condo	Price	\$1,500,000	Sq. Ft.	901	Beds	2
DOM	358	Initial	\$1,500,000	PPSF	\$1,665	Baths	2

Compass is a licensed real estate broker and abides by Equal Housing Opportunity laws. All material presented herein is intended for informational purposes only. Information is compiled from sources deemed reliable but is subject to errors, omissions, changes in price, condition, sale, or withdrawal without notice. No statement is made as to the accuracy of any description. All measurements and square footages are approximate. This is not intended to solicit property already listed. Nothing herein shall be construed as legal, accounting or other professional advice outside the realm of real estate brokerage.



144-36 32nd Ave

Flushing

Contract Signed

Type	House	Price	\$1,450,000	Sq. Ft.	2,000	Beds	4
DOM	32	Initial	\$1,450,000	PPSF	\$725	Baths	1

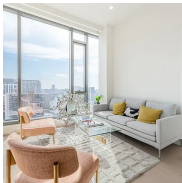


154-26 Powells Cove Boulevard

Beechhurst

Contract Signed

Type	House	Price	\$1,388,888	Sq. Ft.	2,103	Beds	3
DOM	20	Initial	\$1,388,888	PPSF	\$661	Baths	3



35-32 Leavitt St, Unit PHA

Flushing

Contract Signed

Type	Condo	Price	\$1,340,000	Sq. Ft.	839	Beds	2
DOM	279	Initial	\$1,340,000	PPSF	\$1,598	Baths	2



159-11 29th Ave

Flushing

Contract Signed

Type	House	Price	\$1,325,000	Sq. Ft.	1,489	Beds	4
DOM	80	Initial	\$1,348,000	PPSF	\$890	Baths	2

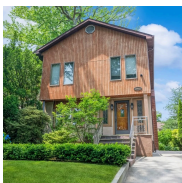


217-17 43rd Ave

Bayside

Contract Signed

Type	House	Price	\$1,288,000	Sq. Ft.	1,300	Beds	3
DOM	29	Initial	\$1,288,000	PPSF	\$991	Baths	2



196-15 Como Ave

Holliswood

Contract Signed

Type	House	Price	\$1,250,000	Sq. Ft.	2,100	Beds	4
DOM	21	Initial	\$1,200,000	PPSF	\$596	Baths	2

Compass is a licensed real estate broker and abides by Equal Housing Opportunity laws. All material presented herein is intended for informational purposes only. Information is compiled from sources deemed reliable but is subject to errors, omissions, changes in price, condition, sale, or withdrawal without notice. No statement is made as to the accuracy of any description. All measurements and square footages are approximate. This is not intended to solicit property already listed. Nothing herein shall be construed as legal, accounting or other professional advice outside the realm of real estate brokerage.